

LIGHT TOWERS

GENERAL
CATALOGUE

2019

GENERAC FACTORY



A LEADING ITALIAN COMPANY SINCE 1997

Since 1997, we have dedicated ourselves to the production of mobile light towers. This focus has allowed us to develop innovative products with high performance, versatility and reliability. In 2013 Tower Light was acquired by Generac Power Systems, Inc., the leading American manufacturer of commercial, industrial and portable power generators. This acquisition allowed Tower Light to take a new step forward the development of new innovative products, as well as to increase the available product range. On March 2015 Tower Light Srl has changed its name into Generac Mobile Products Srl. We are a company with ISO 9001 certification and we have established ourselves as the dominant player in the European market, with a worldwide presence and a continuous growth throughout the years.

1997

2018



R&D



Thanks to our efficient, fast and reliable Research and Development Team, Generac Mobile® since its birth in 1997 has put many milestones on its path. Our Research and Development department has been developing innovative and unique solutions in the market, up from its origins, like the vertical telescopic mast, LED lamps and hybrid engine configurations. R&D skills and twenty years of experience allowed Generac Mobile® to launch on the market new products like: power generators, diesel-driven pumps, dust control units, anti-theft boxes and closed water loop washing bays. R&D staff is 100% focused on increasing the quality of our products and constantly develop new customer-oriented solutions.

SPARE PARTS



Customers are always at the center of every daily action made in Generac Mobile®. The management of spare parts are a great strength point of our organization. Our factory warehouses will meet any request with a real time shipments through express courier. Our spare parts inventory covers every single machine ever manufactured; the service is rapid, efficient and complete and over 90% of orders received are carried out within 48 hours, thanks to a dedicated staff operating with a series of brand-new automated spare parts storage systems. Spare parts service is also supported by authorized workshops of the manufacturers of the engines used on our power generators. They are able to take action quickly and replace damaged engine components with original parts.

SERVICE



Ensuring a good and quick after-sales service is our first objective here in Generac Mobile®. As part of our business philosophy we believe that if a product is not followed by an adequate after-sales service, then it does not even make sense for this product to exist. Generac Mobile® is constantly focused on developing a network of local service centers across the world able to fix any problem with the best professional approach. As well as being able to support our customers via e-mail or by phone, our Service department is available for technical courses anywhere in the world. At the end of the training, attendees always receive a training-certificate stating that the customer is appointed as an authorized Generac Mobile® workshop in the country of origin.

DIGITAL CONTROLLER GTL01

The most of our light tower models are equipped with a digital control panel (GTL01) that allows the operator to interact with the unit ensuring proper control functionalities and electrical protections in compliance with measures of protection for safety. Featured circuit breakers and toggles work in synergy with the GTL01, that has been directly designed and developed by Generac Mobile®. This is specifically committed to supervise and to manage all the light tower functions.

CONTROL PANEL MAIN FEATURES:

Protections and toggles:

- Protections:
 - RCBO: Residual-Current Circuit Breaker with Overcurrent protection
 - MCB: Magnetotermic Circuit Breakers
 - Fuses
- Toggles:
 - Generator/Mains switch*
 - Mast control
 - Emergency stop button



GTL01 CONTROLLER

Through the GTL01 digital controller, the operator can easily and quickly manage all commands and tasks of the light tower.

AUTO control mode settings (in case of darkness sensor and/or timer options) are directly accessible via GTL01 operator Menu.

This powerful controller is the all-in-one “smart - mind” of the light tower.

Operator menu:

- Event list
- Schedule timer settings*
- Darkness sensor settings*
- Language selection
- Date and Clock adjustment
- Display brightness/contrast adjustment
- Light hours counter
- Maintenance reset
- Time to next maintenance)

Alarms:

- Engine alarms:
 - Low oil pressure
 - Battery charger failure
 - High coolant temperature
 - Low fuel level
 - Fail to start
 - Fail to stop
 - Emergency stop *
 - External shutdown*
- Generator Alarms:
 - Over voltage
 - Over frequency
 - Under voltage
 - Under frequency

Alarm/Event list:

- Generator voltage
- Generator frequency
- Date and real-time clock
- Engine running hours
- Engine status
- Maintenance request
- Control Mode enabled
- Active alarm indication
- Fuel level gauge

Available as standard on:

- VT1
- V20 / V20 Hybrid / iQ20

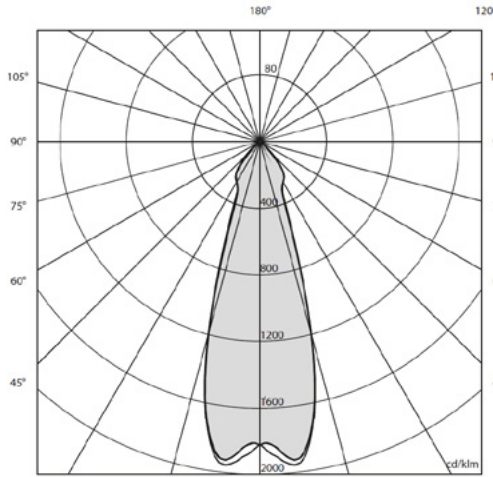
- VT-MINE
- CUBE+ (only Tradition and Super)
- HYDRO POWER BOX (only Tradition and Super)

*Option available upon request



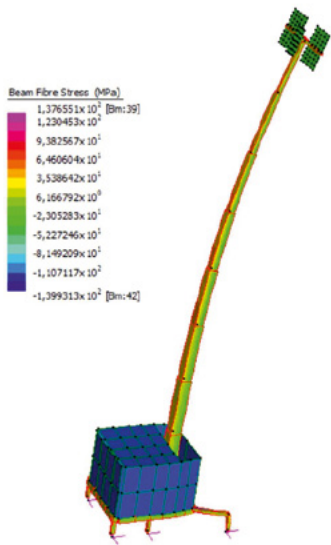
ISO 9001

Generac Mobile® has implemented and maintains a management system for the design and manufacturing which fulfills the requirements of the ISO 9001:2015 / Quality Management System standards. This certification has been issued by a third-party independent authority.



ILLUMINATED AREA

Light towers manufactured by Generac Mobile® are equipped with floodlights of different type and wattage; each of them has been tested by a third-party independent authority to officially certify the luminous power.



WIND SPEED STABILITY

All light towers manufactured by Generac Mobile® have a specific resistance to the wind speed, that is guaranteed only under a correct installation of the machine by following the instructions described on the user manual. The wind speed stability certifications have been issued by a third-party independent authority.

All the certifications are available on request. For further information please contact us at gmp.srl@generac.com

GREEN LINE

Generac Mobile® is always looking for new, environmentally friendly solutions and that is what led us to create a specific line of light towers equipped with hybrid or full battery technologies. The machines in this innovative line present considerable advantages in terms of fuel savings, noise reduction and CO₂ emissions.





VT-Hybrid

- Height: 8.5 m
- Floodlights: 4x150W LED
- Running time: 650+ hours
- Site-tow or road trailer
- Low noise

p. 10-11



V20 Hybrid

- Height: 8.5 m
- 4x150W LED or 4x300W LED
- Running time: 230+ hours
- Site-tow or road trailer
- Lithium battery

p. 12-13



Hydro Power Box Hybrid

- Height: 8.3 m
- Floodlights: 4x150W LED
- Running time: 1200+ hours
- Vandalism-proof solution
- Top accessibility

p. 14-15



CUBE+ Hybrid

- Height: 8.4 m
- Floodlights: 4x150W LED
- Running time: 700+ hours
- Mounted on base
- Top accessibility

p. 16-17



CUBE+ NEXT

- Height: 8.4 m
- 4x150W or 4x300W LED
- Running time: up to 112 hours
- Mounted on base
- Full battery technology

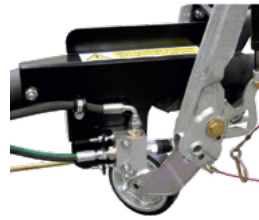
p. 18-19

GREEN LIGHT TOWERS: OPTIONS



110 V inlet plug

Standard 230V inlet plug is replaced with a 110V plug.



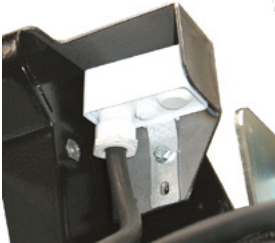
AMOSS kit

The AMOSS kit automatically lowers the light tower mast when handbrake is released.



Shut down valve

An air intake shutoff valve for automatically turning off the diesel engine when overrunning.



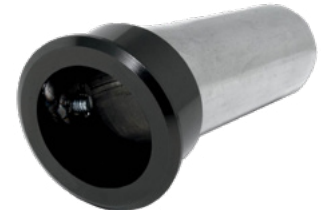
Darkness sensor

A sensor able to detect the environmental light for automatic on/off of the floodlights.



Pre-heating system

A system to heat the engine before starting. Suggested for cold environment.



Certified spark arrestor

A device which prevents the emission of flammable debris from exhaust.



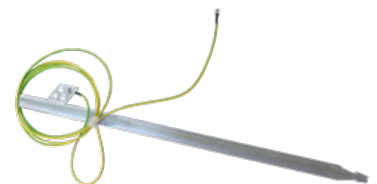
Hot-dip zinc coating of mast

A process of dipping the mast steel sections into molten zinc to provide a distinct advantage over corrosion.



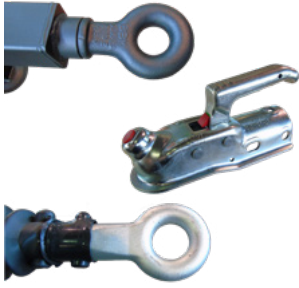
Digital timer

A digital programmable timer for automatic on/off of the floodlights (not compatible with GTL01 equipped models).



Earth picket with 5 m cable

A grounding system including a 5 meters cable and a metal picket to be planted into the ground.



Hitches

Three different types of hitch to be mounted on the trailer (suggested for road trailers): ball hitch 50 mm; eyelet hitch 50 mm; French hitch 68 mm.



Trailers

Our light towers can be available with different types of trailers:

- Road trailer type A (straight tow-bar)
- Road trailer type B (foldable tow-bar)
- Road trailer type C (adjustable tow-bar)
- Site-tow trailer



Dedicated color

Our light tower models can be painted with one or two colors at customer's choice (RAL code).



OTHER OPTIONS AVAILABLE:

- Additional spare tyre with support
- Documents for EU road registration
- Plastic box for documents
- Insulation monitoring device
- Remote controller (telemetric system)
- Remote emergency stop

VT-HYBRID

The VT-Hybrid is the first hybrid light tower in the world. It is equipped with 4x150W high efficiency LED floodlights powered by a rechargeable battery pack. This light tower guarantees a great reliability and a perfect sustainability. Mobile version with site-tow or road trailer.



MPNANO DIGITAL CONTROLLER

A digital controller studied to manage every function of the hybrid system.



VT-Hybrid

| TECHNICAL DATA | | |
|------------------------------------|---------------------------|-----------------------|
| Minimum dimensions (mm) | Length x Width x Height | 3250 x 1400 x 2440 |
| Maximum dimensions (mm) | Length x Width x Height | 3250 x 2100 x 8500 |
| Dry weight (kg) | | 1230 |
| Lifting system | M: Manual / H: Hydraulic | H |
| Mast rotation (°) | | 340 |
| Lamps power (W) | | 4 x 150 |
| Lamps type | MH: MetalHalide / LD: LED | LD |
| Total lumen (Lm) | | 76500 |
| Illuminated area (m ²) | | 2500 |
| Engine | | Yanmar L70N |
| Engine cooling | L: Liquid / A: Air | A |
| Cylinders (q.ty) | | 1 |
| Engine speed (RPM) | 50 / 60 Hz | 3000 / 3600 |
| Liquid containment (110%) | √: Yes / ●: No | √ |
| Alternator | kVA/V/Hz | 5/220/50 – 5/240/60 |
| Battery recharging time (h) | | 5 |
| Battery running time (h) | | 8 |
| Inlet plug | A/V/Hz | 16/220/50 – 16/240/60 |
| Avg. sound pressure | dB(A) @ 7m | 0 – 67 |
| Wind speed resistance (km/h) | | 110 |
| Tank capacity (liters) | | 160 |
| Total running time (h) | | 665 |

BATTERY PACK

The VT-Hybrid provides up to 8 hours of continuous operation without carbon dioxide emissions, fuel consumption nor noise, thanks to the battery pack. The special dry batteries are able to be recharged in less than 5 hours and have a guaranteed charge/discharge cycle of more than 4000 hours. The batteries can be recharged from either an external power source or from the built-in backup generator.

BACKUP GENERATOR

When the VT-Hybrid has utilized all of the stored energy from the battery pack, the diesel generator will automatically start, providing all the energy required to power the lamps and at the same time recharging the battery pack. When the battery pack is fully recharged, the generator will automatically turn off.



GENERAC® LED LAMPS

4x150 W high efficiency LED floodlights designed by Generac Mobile®.

LOW NOISE AND CARBON DIOXIDE EMISSION!

When the VT-Hybrid is powered through the battery pack, it is completely silent and doesn't emit carbon dioxide (CO₂). An ideal solution for events and working areas with low noise or CO₂ emission requirements.

THE LONGEST RUNNING TIME!

Thanks to the hybrid features and the LED lamps, this model can run more than 660 hours without refueling.

DIFFERENT TYPES OF TRAILER

The VT-Hybrid is equipped as standard with a site-tow trailer but as options there are available different types of road trailers with lights, brakes and documents for EU road homologation.

OPTIONS AVAILABLE

- Low speed site-tow trailer (standard)
- Road trailer type A (straight)
- Road trailer type B (foldable)
- Road trailer type C (adjustable)
- Ball hitch type 50 mm
- Eyelet hitch type 50 mm
- French hitch type 68mm for road trailer type C
- Documents for EU road registration
- Additional spare tyre with support
- Pre-heating system
- AMOSS kit
- Darkness sensor
- Digital timer
- Earth picket with 5m cable
- Plastic box for documents
- Dedicated colour
- Shut down valve
- Certified spark arrestor
- Hot-dip zinc coating of mast sections
- Insulation monitoring device
- Remote controller (telemetric system)
- Remote emergency stop

V20 HYBRID

The V20 Hybrid is equipped with a hybrid powering system composed by an high efficiency lithium battery pack and a diesel backup generator. Thanks to this new technology, this model has a long running time with heavy reduction of fuel consumption and carbon emission.



GTL03 DIGITAL CONTROLLER

A digital controller specifically studied to manage every function of the light tower for the best ease of use.



GENERAC® LED LAMPS

4x300 W high efficiency LED floodlights designed by Generac Mobile®.

V20 Hybrid 4x150W

V20 Hybrid 4x300W

| TECHNICAL DATA | | V20 Hybrid 4x150W | V20 Hybrid 4x300W |
|---|---------------------------|--------------------|--------------------|
| Minimum dimensions (mm) | Length x Width x Height | 2200 x 1400 x 2440 | 2200 x 1400 x 2440 |
| Maximum dimensions (mm) | Length x Width x Height | 2200 x 1850 x 8500 | 2200 x 1850 x 8500 |
| Dry weight (kg) | | 1050 | 1060 |
| Lifting system | M: Manual / H: Hydraulic | H | H |
| Mast rotation (°) | | 340 | 340 |
| Lamps power (W) | | 4 x 150 | 4 x 300 |
| Lamps type | MH: MetalHalide / LD: LED | LD | LD |
| Max. total lumen | | 76500 | 153000 |
| Max. illuminated area (m ²) | | 2500 | 4200 |
| Engine | | Yanmar L100N | Yanmar L100N |
| Engine cooling | L: Liquid / A: Air | A | A |
| Cylinders (q.ty) | | 1 | 1 |
| Engine speed | 50 Hz | 2200 | 2200 |
| Liquid containment (110%) | | √ | √ |
| Alternator | kVA/V/Hz | 5/220/50 | 5/220/50 |
| Battery recharging time | @100% dimming | 2h 06' | 2h 26' |
| Battery running time | @100% dimming | 8h 20' | 4h 06' |
| Inlet plug | A/V/Hz | 16/220/50 | 16/220/50 |
| Avg. sound pressure | dB(A) @ 7m | 0 - 66 | 0 - 66 |
| Wind speed resistance (km/h) | | 110 | 110 |
| Tank capacity (liters) | | 85 | 85 |
| Total running time (h) | @75% dimming | 410 | 231 |

BATTERY PACK

The V20 Hybrid provides up to 8 hours of continuous operation without carbon dioxide emissions, fuel consumption nor noise, thanks to the battery pack. The special lithium batteries are able to be recharged in less than 3 hours. The batteries can be recharged from either an external power source or from the built-in backup generator.

BACKUP GENERATOR

When the V20 Hybrid has utilized all of the stored energy from the battery pack, the diesel generator will automatically start, providing all the energy required to power the lamps and at the same time recharging the battery pack. When the battery pack is fully recharged, the generator will automatically turn off.

LOW NOISE AND CARBON DIOXIDE EMISSION!

When the V20 Hybrid is powered through the battery pack, it is completely silent and doesn't emit carbon dioxide (CO₂). An ideal solution for events and working areas with low noise or CO₂ emission requirements.

THE LONGEST RUNNING TIME!

Thanks to the hybrid features and the LED lamps, this model can run more than 230 hours without refueling.

AUTO START/STOP

Fitted as standard, the Darkness sensor with Digital timer allow the automatic start and stop of the machine offering great control energy savings.



OPTIONS AVAILABLE

- Low speed site-tow trailer (standard)
- Road trailer type A (straight)
- Road trailer type B (foldable)
- Road trailer type C (adjustable)
- Road trailer type D (straight)
- Ball hitch type 50 mm
- Eyelet hitch type 50 mm
- French hitch type 68mm for road trailer type C
- Documents for EU road registration
- Additional spare tyre with support
- AMOSS kit
- Earth picket with 5m cable
- Pre-heating system
- Plastic box for documents
- Dedicated colour
- Shut down valve
- Certified spark arrestor
- Hot-dip zinc coating of mast sections
- Insulation monitoring device
- Remote controller (Trackunit)
- Remote emergency stop controller

HYDRO POWER BOX HYBRID

The Hydro Power Box is now available in the innovative hybrid configuration! Thanks to its high safety features, the Hydro Power Box Hybrid is a light tower ideal for illuminating live events like concerts and sport matches, even placed near the public.



MPNANO DIGITAL CONTROLLER

A digital controller studied to manage every function of the hybrid system.



Hydro Power Box Hybrid

| TECHNICAL DATA | | |
|------------------------------------|-------------------------|-----------------------|
| Minimum dimensions (mm) | Length x Width x Height | 1204 x 1200 x 2550 |
| Maximum dimensions (mm) | Length x Width x Height | 1204 x 1200 x 8300 |
| Dry weight (kg) | | 1194 |
| Lifting system | M:Manual / H:Hydraulic | H |
| Mast rotation (°) | | 340 |
| Lamps power (W) | | 4 x 150 |
| Lamps type | MH:MetalHalide / LD:LED | LD |
| Total lumen (Lm) | | 76500 |
| Illuminated area (m ²) | | 2500 |
| Engine | | Yanmar L70N |
| Engine cooling | L: Liquid / A: Air | A |
| Cylinders (q.ty) | | 1 |
| Engine speed (RPM) | 50 / 60 Hz | 3000 / 3600 |
| Liquid containment (110%) | √: Yes / ●: No | √ |
| Alternator | kVA/V/Hz | 5/220/50 – 5/240/60 |
| Battery recharging time (h) | | 5 |
| Battery running time (h) | | 8 |
| Inlet plug | A/V/Hz | 16/220/50 – 16/240/60 |
| Avg. sound pressure | dB(A) @ 7m | 0 – 66 |
| Wind speed resistance (km/h) | | 80 |
| Tank capacity (liters) | | 300 |
| Total running time (h) | | 1248 |

BATTERY PACK

The HPB Hybrid provides up to 8 hours of continuous operation without carbon dioxide emissions, fuel consumption nor noise, thanks to the battery pack. The special dry batteries are able to be recharged in less than 5 hours and have a guaranteed charge/discharge cycle of more than 4000 hours. The batteries can be recharged from either an external power source or from the built-in backup generator.

BACKUP GENERATOR

When the HPB Hybrid has utilized all of the stored energy from the battery pack, the diesel generator will automatically start, providing all the energy required to power the lamps and at the same time recharging the battery pack. When the battery pack is fully recharged, the generator will automatically turn off.



GENERAC® LED LAMPS

4x150 W high efficiency LED floodlights designed by Generac Mobile®.

LOW NOISE AND CARBON DIOXIDE EMISSION!

When the HPB Hybrid is powered through the battery pack, it is completely silent and doesn't emit carbon dioxide (CO₂). An ideal solution for events and working areas with low noise or CO₂ emission requirements.

THE LONGEST RUNNING TIME!

Thanks to the hybrid features and the LED lamps, this model can run more than 1200 hours without refueling.

TOP ACCESSIBILITY

The HPB has two large doors to easily reach the technical area. The lamps can be easily adjusted by using the ladder included in the machine.

OPTIONS AVAILABLE

- Darkness sensor
- Digital timer
- 110V inlet plug
- Earth picket with 5m cable
- Pre-heating system
- Plastic box for documents
- Dedicated colour
- Shut down valve
- Certified spark arrestor
- Hot-dip zinc coating of mast sections
- Insulation monitoring device
- Remote controller (telemetric system)
- Remote emergency stop

CUBE+ HYBRID

The CUBE+ Hybrid is equipped with an hybrid powering system. The extreme compactness and the new special features make this model ideal to be used during events or areas with low noise or carbon dioxide emission requirements.



MPNANO DIGITAL CONTROLLER

A digital controller studied to manage every function of the hybrid system.



CUBE+ Hybrid

| TECHNICAL DATA | | |
|------------------------------------|---------------------------|-----------------------|
| Minimum dimensions (mm) | Length x Width x Height | 1220 x 1150 x 2420 |
| Maximum dimensions (mm) | Length x Width x Height | 1790 x 1740 x 8400 |
| Dry weight (kg) | | 1180 |
| Lifting system | M: Manual / H: Hydraulic | H |
| Mast rotation (°) | | 340 |
| Lamps power (W) | | 4 x 150 |
| Lamps type | MH: MetalHalide / LD: LED | LD |
| Total lumen (Lm) | | 76500 |
| Illuminated area (m ²) | | 2500 |
| Engine | | Yanmar L70N |
| Engine cooling | L: Liquid / A: Air | A |
| Cylinders (q.ty) | | 1 |
| Engine speed (RPM) | 50 / 60 Hz | 3000 / 3600 |
| Liquid containment (110%) | √: Yes / ●: No | √ |
| Alternator | kVA/V/Hz | 5/220/50 – 5/240/60 |
| Battery recharging time (h) | | 5 |
| Battery running time (h) | | 8 |
| Inlet plug | A/V/Hz | 16/220/50 – 16/240/60 |
| Avg. sound pressure | dB(A) @ 7m | 0 – 65 |
| Wind speed resistance (km/h) | | 80 |
| Tank capacity (liters) | | 170 |
| Total running time (h) | | 707 |

BATTERY PACK

The CUBE⁺ Hybrid provides up to 8 hours of continuous operation without carbon emissions, fuel consumption nor noise, thanks to the battery pack. The special dry batteries are able to be recharged in less than 5 hours and have a guaranteed charge/discharge cycle of more than 4000 hours. The batteries can be recharged from either an external power source or from the built-in backup generator.

BACKUP GENERATOR

When the CUBE⁺ Hybrid has utilized all of the stored energy from the battery pack, the diesel generator will automatically start, providing all the energy required to power the lamps and at the same time recharging the battery pack. When the battery pack is fully recharged, the generator will automatically turn off.



GENERAC[®]

LED LAMPS

4x150 W high efficiency LED floodlights designed by Generac Mobile[®].

LOW NOISE AND CARBON DIOXIDE EMISSION!

When the CUBE⁺ Hybrid is powered through the battery pack, it is completely silent and doesn't emit carbon dioxide (CO₂). An ideal solution for events and working areas with low noise or CO₂ emission requirements.

THE LONGEST RUNNING TIME!

Thanks to the hybrid features and the LED lamps, this model can run more than 700 hours without refueling.

TOP ACCESSIBILITY

5 doors for a wider access. 4 wide doors, provide a complete access to the technical area. 1 compass-top door for safe and convenient maintenance of the engine.

OPTIONS AVAILABLE

- Darkness sensor
- Digital timer
- 110V inlet plug
- Earth picket with 5m cable
- Pre-heating system
- Plastic box for documents
- Dedicated colour
- Shut down valve
- Certified spark arrestor
- Hot-dip zinc coating of mast sections
- Insulation monitoring device
- Remote controller (telemetric system)
- Remote emergency stop

CUBE+ NEXT

The CUBE+ NEXT is a new battery powered lighting tower that has been designed to attain the highest levels of performance and safety with total respect for the environment. Providing the longest range in battery powered lighting towers we have set the standard. Zero noise, zero pollution, simply Generac Mobile®!



GENERAC® LED LAMPS

Choose between 4x150W or 4x300W LED floodlights designed by Generac Mobile®.

CUBE+ NEXT 4x150W

CUBE+ NEXT 4x300W

| TECHNICAL DATA | | CUBE+ NEXT 4x150W | CUBE+ NEXT 4x300W |
|------------------------------|---------------------------|-----------------------|-----------------------|
| Minimum dimensions (mm) | Length x Width x Height | 1220 x 1150 x 2420 | 1220 x 1150 x 2420 |
| Maximum dimensions (mm) | Length x Width x Height | 1790 x 1740 x 8400 | 1790 x 1740 x 8400 |
| Dry weight (kg) | | 1260 | 1280 |
| Lifting system | M: Manual / H: Hydraulic | H | H |
| Mast rotation (°) | | 340 | 340 |
| Max. lamps power | | 4 x 150 | 4 x 300 |
| Lamps type | MH: MetalHalide / LD: LED | LD | LD |
| Max. total lumen | | 76500 | 153000 |
| Max. illuminated area (m²) | | 2500 | 4200 |
| Battery running time (h) | @33% dimming | 112 | 56 |
| | @80% dimming | 45 | 22 |
| | @100% dimming | 36 | 17 |
| Battery recharging time (h) | | 12 | 12 |
| Inlet plug | A/V/Hz | 32/220/50 – 32/240/60 | 32/220/50 – 32/240/60 |
| Avg. sound pressure | dB(A) @ 7m | 0 | 0 |
| Wind speed resistance (km/h) | | 80 | 80 |

BATTERY PACK

The CUBE+ NEXT is powered only by a plug in/out battery pack with digital control panel to keep track and manage charge levels.

DIMMABLE POWER

The CUBE+ NEXT is equipped with a dimmer switch able to control the lamp output and manage energy consumption, application and performance.

AUTO START/STOP

Fitted as standard, the Darkness sensor with Digital timer allow the automatic start and stop of the machine offering great control energy savings.

ZERO NOISE AND CARBON DIOXIDE EMISSION!

Thanks to the full battery technology, the CUBE+ NEXT is completely silenced and doesn't emit carbon dioxide.

TOP ACCESSIBILITY

4 wide doors, provide a complete access to the control panel and the technical area for a safe and convenient control and maintenance of the machine.



OPTIONS AVAILABLE

- Plastic box for documents
- Hot-dip zinc coating of mast sections
- Dedicated color

MOBILE LINE

A wide range of resistant and tough mobile light towers with high quality standards. This range is made-up of light towers equipped with different kinds of road or site-tow trailers, for use in the most hard working environments. The smallest models are equipped with a practical manual hand trolley allowing a single operator to manoeuvre quickly and safely. They are ideal for use in areas where illumination needs to be frequently repositioned.



HYDRAULIC



VT1

- Height: 8.5 m
- Floodlights: 4x1000W MH
- Hydraulic lifting system
- Digital controller
- Site or road trailer

p. 24-25

MANUAL



VT8

- Height: 8 m
- Floodlights: 4x1000W MH
- Manual lifting system
- Site-tow or road trailer
- 3 engines available

p. 34-35

MINI



Linktower T3

- Height: 6,7 m
- 4x185W or UFO 400W LED
- Manual lifting system
- Linkable in series
- ATEX version available

p. 40-41



V20

- Height: 8.5 m
- Floodlights: 4x320W LED
- Hydraulic lifting system
- Digital controller
- Site-tow or road trailer

p. 26-27



IQ20

- Height: 8.5 m
- Floodlights: 4x320W LED
- Hydraulic lifting system
- Digital controller
- Site-tow or road trailer

p. 28-29



VT-MINE

- Height: 8.5 m
- Floodlights: 6x320W LED
- Hydraulic lifting system
- Digital controller
- Special for mining sector

p. 30-31



HYDRO

- Height: 8.5 m
- 4x1000W MH or 4x320W LED
- Hydraulic lifting system
- 10 or 22 kVA generator
- Site-tow trailer

p. 32-33



VMAX

- Height: 8 m
- Floodlights: 6x320W LED
- Manual lifting system
- Reinforced frame
- Liquid containment tank
- Perkins engine

p. 36-37



VTevo

- Height: 8 m
- Floodlights: 4x320W LED
- Manual lifting system
- Compact shape
- Yanmar or Kubota engine

p. 38-39



MT1

- Height: 5.3 m
- 4x185W or UFO 400W LED
- Manual lifting system
- Extremely compact
- Hand trolley or road trailer

p. 42-43



MT2

- Height: 5.3 m
- Floodlights: 4x185W LED
- Manual lifting system
- Extremely compact
- Hand trolley or road trailer

p. 44-45

MOBILE LIGHT TOWERS: OPTIONS



110 V sockets

Standard 230V inlet and/or outlet sockets are replaced with 110V sockets.



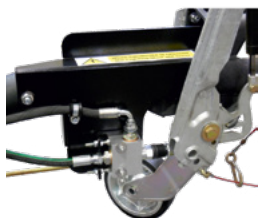
Additional outlet socket 16A 230V

An outlet socket 16A 230V additional to the one already mounted on the frontal panel.



Shut off valve

An air intake shutoff valve for automatically turning off the diesel engine when overrunning.



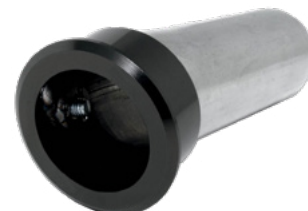
AMOSS kit

The AMOSS kit automatically lowers the light tower mast when handbrake is released.



Pre-heating system

A system to heat the engine before starting. Suggested for cold environments.



Certified spark arrestor

A device which prevents the emission of flammable debris from exhaust.



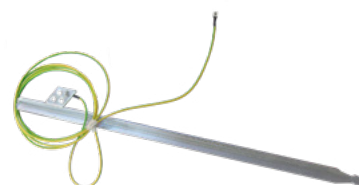
Darkness sensor

A sensor able to detect the environmental light for automatic on/off of the floodlights.



Digital timer for Linktower

A digital programmable timer for automatic on/off of the floodlights.



Earth picket with 5 m cable

A grounding system including a 5 meters cable and a metal picket to be planted into the ground.



Electric tilting heads

A system to let the operator tilt the floodlights from the control panel without lowering the mast.



Hot-dip zinc coating of mast

A process of dipping the mast steel sections into molten zinc to provide a distinct advantage over corrosion.



Insulation monitoring device

A grounding system that disconnects the power supply when the resistance between the two conductors drops below the set value.



Main/generator selector switch

A manual switch to select the power source of the floodlights between the integrated power generator or an external power source.



Hitches

Three different types of hitch to be mounted on the trailer (suggested for road trailers): ball hitch 50 mm; eyelet hitch 50 mm; French hitch 68 mm.



Trailers

Our light towers can be available with different types of trailers:

- Road trailer type A (straight tow-bar)
- Road trailer type B (foldable tow-bar)
- Road trailer type C (adjustable tow-bar)
- Road trailer type D (for V20)
- Road trailer type E (for MT1)
- Road axle only
- Special mining trailer with brakes
- Site-tow trailer

OTHER OPTIONS AVAILABLE:

- Additional spare tyre with support
- Documents for EU road registration
- Plastic box for documents
- Second year of warranty
- Low voltage kit
- Zinc coated base
- Dedicated color
- Remote controller (telemetric system)
- Remote emergency stop

VT1

The first light tower in the world with integrated vertical telescopic mast. The VT1 has revolutionized the market for over fifteen years, becoming the best seller model of mobile light tower in Europe. Thanks to the 4x1000W powerful metal halide floodlights and the 8.5 meters mast, the VT1 can illuminate very big working areas.



GTL01 DIGITAL CONTROLLER

A digital controller specifically studied to manage every function of the light tower for the best ease of use.



VT1 K

VT1 Y

| TECHNICAL DATA | | VT1 K | VT1 Y |
|------------------------------------|---------------------------|---------------------|---------------------|
| Minimum dimensions (mm) | Length x Width x Height | 3400 x 1580 x 2360 | 3400 x 1580 x 2360 |
| Maximum dimensions (mm) | Length x Width x Height | 3400 x 1850 x 8500 | 3400 x 1850 x 8500 |
| Dry weight (kg) | | 1150 | 1150 |
| Lifting system | M:Manual / H:Hydraulic | H | H |
| Mast rotation (°) | | 340 | 340 |
| Lamps power (W) | | 4 x 1000 | 4 x 1000 |
| Lamps type | MH: MetalHalide / LD: LED | MH | MH |
| Total lumen (Lm) | | 360000 | 360000 |
| Illuminated area (m ²) | | 4200 | 4200 |
| Engine | | Kubota D1105 | Yanmar 3TNM72 |
| Engine cooling | L: Liquid / A: Air | L | L |
| Cylinders (q.ty) | | 3 | 3 |
| Engine speed (RPM) | 50 / 60 Hz | 1500 / 1800 | 1500 / 1800 |
| Liquid containment (110%) | √: Yes / •: No | √ | √ |
| Alternator | kVA/V/Hz | 8/220/50 – 8/240/60 | 8/220/50 – 8/240/60 |
| Outlet Socket | kVA/V/Hz | 3/220/50 – 3/240/60 | 3/220/50 – 3/240/60 |
| Avg. sound pressure | dB(A) @ 7m | 65 | 67 |
| Wind speed resistance (km/h) | | 110 | 110 |
| Tank capacity (liters) | | 112 | 112 |
| Total running time (h) | | 66 | 70 |

THE BEST SELLER

The VT1 is the best-seller model of light tower in the European market, thanks to the vertical mast and the high quality features granted by Generac Mobile®.

VERTICAL MAST

The first vertical mast in the world, with an hydraulic lifting system and a maximum height of 8.5 meters.

METAL HALIDE LAMPS

4x1000W powerful metal halide lamps able to illuminate medium and big working areas.

TRAILER OPTIONS

The VT1 can be equipped with low speed trailer for building sites or road trailer with lights, brakes and documents for EU road homologation.

ENGINE OPTIONS

You can choose the engine you prefer between Kubota D1105 and Yanmar 3TN.

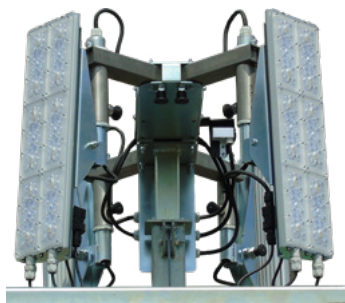


OPTIONS AVAILABLE

- Low speed site-tow trailer (standard)
- Road trailer type A (straight)
- Road trailer type B (foldable)
- Road trailer type C (adjustable)
- Ball hitch type 50 mm
- Eyelet hitch type 50 mm
- French hitch type 68mm for road trailer type C
- Documents for EU road registration
- Additional spare tyre with support
- Pre-heating system
- AMOSS kit
- Main/generator selector switch
- Additional outlet socket 16A 230V
- Darkness sensor
- 110V sockets
- Electric tilting heads
- Earth picket with 5m cable
- Plastic box for documents
- Dedicated colour
- Shut off valve
- Certified spark arrestor
- Hot-dip zinc coating of mast sections
- Insulation monitoring device
- Remote controller (telemetric system)
- Remote emergency stop

V20

The V20 is a brand-new mobile light tower equipped with 4x320W high efficiency LED lamp floodlights. More than 160 hours of running time and one of the lowest sound pressure level in the industry: only 58 dB(A) at 7 meters. Now available also equipped with HYPER LED Technology.



HYPER LED TECHNOLOGY

Special LED floodlights installed on a fully adjustable bracket allowing the operator to point the floodlights in any direction and provide total 360° illumination. Floodlights are also available with anti-glare system.



GENERAC® LED LAMPS

4x320 W high efficiency LED floodlights designed by Generac Mobile®.



GTL01 DIGITAL CONTROLLER

A digital controller specifically studied to manage every function of the light tower for the best ease of use.

V20 K2

V20 HYPER K2

| TECHNICAL DATA | | V20 K2 | V20 HYPER K2 |
|------------------------------------|-------------------------|-----------------------|-----------------------|
| Minimum dimensions (mm) | Length x Width x Height | 2200 x 1400 x 2440 | 2200 x 1400 x 2440 |
| Maximum dimensions (mm) | Length x Width x Height | 2200 x 1850 x 85000 | 2200 x 1850 x 8500 |
| Dry weight (kg) | | 980 | 980 |
| Lifting system | M:Manual / H:Hydraulic | H | H |
| Mast rotation (°) | | 340 | 340 |
| Lamps power (W) | | 4 x 320 | 4 x 320 |
| Lamps type | MH:MetalHalide / LD:LED | LD | LD |
| Total lumen (Lm) | | 167300 | 184000 |
| Illuminated area (m ²) | 180° / 360° | 4500 / n.a. | 4500 / 4200 |
| Engine | | Kubota Z482 | Kubota Z482 |
| Engine cooling | L: Liquid / A: Air | L | L |
| Cylinders (q.ty) | | 2 | 2 |
| Engine speed (RPM) | 50 / 60 Hz | 1500 / 1800 | 1500 / 1800 |
| Liquid containment (110%) | √: Yes / •: No | √ | √ |
| Alternator | kVA/V/Hz | 5/220/50 – 5/240/60 | 5/220/50 – 5/240/60 |
| Outlet Socket | kVA/V/Hz | 2/220/50 – 2/240/60 | 2/220/50 – 2/240/60 |
| Inlet plug | A/V/Hz | 16/220/50 – 16/240/60 | 16/220/50 – 16/240/60 |
| Avg. sound pressure | dB(A) @ 7m | 58 | 58 |
| Wind speed resistance (km/h) | | 110 | 110 |
| Tank capacity (liters) | | 100 | 100 |
| Total running time (h) | | 167 | 167 |

LOW VOLTAGE LED

The floodlights are powered with 48 Volts. No more high voltages on external cables.
Safety as a must!

TOP ACCESSIBILITY

3 doors for a wider access.
2 compass-top doors with «wing» shape provide a complete access to the engine for a safe and convenient maintenance.
1 back door allows the access to the digital control panel.

RLS-RAPID LOCKING STABILIZERS

The special shape of the adjustable stabilizers allows the operator to level the V20 in few seconds.

THE LOWEST NOISE LEVEL!

Innovation means also decreasing the noise level!
The V20 light tower emits only 58 dB(A) @ 7 meters.

LONG RUNNING TIME

Thanks to the V20's fuel saving features such as the small engine and the LED lamps, this model can run up to 167 hours without refueling.

COMPACT SHAPE

Save transport costs with the V20!
Up to 13 units can be loaded on a single truck.

DOUBLE POWER

You can connect a V20 to another V20 and run two lighting towers with only one engine.



OPTIONS AVAILABLE

- Low speed site-tow trailer (standard)
- Road trailer type A (straight)
- Road trailer type C (adjustable)
- Road trailer type D (straight - short version)
- Ball hitch type 50 mm
- Eyelet hitch type 50 mm
- French hitch type 68 mm for road trailer type C
- Documents for EU road registration
- Additional spare tyre with support
- Pre-heating system
- AMOSS kit
- Darkness sensor
- 110V sockets
- Earth picket with 5m cable
- Plastic box for documents
- Dedicated colour
- Shut off valve
- Certified spark arrestor
- Hot-dip zinc coating of mast sections
- Insulation monitoring device
- Remote controller (telemetric system)
- Remote emergency stop

iQ20

A mobile lighting tower equipped with a low consumption diesel engine, 4x320W LED floodlights and a digital controller designed by Generac Mobile® for specific use on lighting towers. Thanks to the telemetric system, the iQ20 is the perfect solution for rental companies looking for a simple remote management system of their rental fleet.



GTL01 DIGITAL CONTROLLER

A digital controller specifically studied to manage every function of the light tower for the best ease of use.



GENERAC® LED LAMPS

4x320 W high efficiency LED floodlights designed by Generac Mobile®.

iQ20

| TECHNICAL DATA | | |
|------------------------------|-------------------------|---------------------|
| Minimum dimensions (mm) | Length x Width x Height | 2200 x 1400 x 2440 |
| Maximum dimensions (mm) | Length x Width x Height | 2200 x 1850 x 8500 |
| Dry weight (kg) | | 980 |
| Lifting system | M:Manual / H:Hydraulic | H |
| Mast rotation (°) | | 340 |
| Lamps power (W) | | 4 x 320 |
| Lamps type | MH:MetalHalide / LD:LED | LD |
| Total lumen (Lm) | | 184000 |
| Illuminated area (m²) | | 4500 |
| Engine | | Yanmar L70N |
| Engine cooling | L: Liquid / A: Air | A |
| Cylinders (q.ty) | | 1 |
| Engine speed (RPM) | 50 / 60 Hz | 3000/3600 |
| Liquid containment (110%) | √:Yes / ●:No | √ |
| Alternator | kVA/V/Hz | 5/220/50 – 5/240/60 |
| Avg. sound pressure | dB(A) @7mt | 66 |
| Wind speed resistance (km/h) | | 110 |
| Tank capacity (liters) | | 100 |
| Total running time (h) | | 167 |

TELEMETRIC SYSTEM

The iQ20 model is equipped with a telemetric system granting a constant remote monitoring of machine parameters: GPS position; machine status; fuel and oil levels; alternator measures; lamps and battery status.

LOW VOLTAGE LED

LED powered with 48 Volts. No more high voltages on external cables. Safety as a must!

TOP ACCESSIBILITY

3 doors for a wider access. 2 compass-top doors with «wing» shape provide a complete access to the engine for a safe and convenient maintenance. 1 back door allows the access to the digital control panel.

AMOSS KIT: SAFE AND SMART

Thanks to the AMOSS Kit you cannot raise the mast without pulling the handbrake, and the mast automatically lowers is the handbrake is unlocked.



OPTIONS AVAILABLE

- Low speed site-tow trailer (standard)
- Road trailer type A (straight)
- Road trailer type C (adjustable)
- Road trailer type D (straight - short version)
- Ball hitch type 50 mm
- Eyelet hitch type 50 mm
- French hitch type 68 mm for road trailer type C
- Documents for EU road registration
- Additional spare tyre with support
- Pre-heating system
- AMOSS kit
- Darkness sensor
- 110V sockets
- Earth picket with 5m cable
- Plastic box for documents
- Dedicated colour
- Shut off valve
- Certified spark arrestor
- Hot-dip zinc coating of mast sections
- Insulation monitoring device
- Remote controller (telemetric system)
- Remote emergency stop

VT-MINE

A mobile light tower specifically developed for mining applications. Thanks to its 6x320W LED floodlights, the VT-Mine provides a very high illuminating capacity and all the benefits of the LED lamp. Those benefits include robustness and low maintenance due to the absence of glass and light bulbs. The large fuel tank and the low fuel consumption engine push the refuel intervals to greater than 100 hours of use.



GTL01 DIGITAL CONTROLLER

A digital controller specifically studied to manage every function of the light tower for the best ease of use.



GENERAC® LED LAMPS

6x320 W high efficiency LED floodlights designed by Generac Mobile®.

VT-MINE K

VT-MINE P

| TECHNICAL DATA | | VT-MINE K | VT-MINE P |
|------------------------------------|-------------------------|---------------------|---------------------|
| Minimum dimensions (mm) | Length x Width x Height | 3550 x 1690 x 2330 | 3550 x 1690 x 2330 |
| Maximum dimensions (mm) | Length x Width x Height | 3710 x 1850 x 8500 | 3710 x 1850 x 8500 |
| Dry weight (kg) | | 1320 | 1308 |
| Lifting system | M:Manual / H:Hydraulic | H | H |
| Mast rotation (°) | | 340 | 340 |
| Lamps power (W) | | 6 x 320 | 6 x 320 |
| Lamps type | MH:MetalHalide / LD:LED | LD | LD |
| Total lumen (Lm) | | 276000 | 276000 |
| Illuminated area (m ²) | | 5200 | 5200 |
| Engine | | Kubota D1105 | Perkins 403D-11G |
| Engine cooling | L: Liquid / A: Air | L | L |
| Cylinders (q.ty) | | 3 | 3 |
| Engine speed (RPM) | 50 / 60 Hz | 1500/1800 | 1500/1800 |
| Liquid containment (110%) | √: Yes / •: No | √ | √ |
| Alternator | kVA/V/Hz | 8/220/50 – 8/240/60 | 8/220/50 – 8/240/60 |
| Outlet Socket | kVA/V/Hz | 2/220/50 – 2/240/60 | 2/220/50 – 2/240/60 |
| Avg. sound pressure | dB(A) @ 7m | 65 | 65 |
| Wind speed resistance (km/h) | | 110 | 110 |
| Tank capacity (liters) | | 112 | 112 |
| Total running time (h) | | 120 | 106 |

HYDRAULIC MAST

A vertical telescopic mast with an hydraulic lifting system and a maximum height of 8.5 meters

TRAILER OPTIONS

The VT-Mine can be equipped with low speed trailer for building sites or road trailer with lights, brakes and documents for EU road homologation.

ENGINE OPTIONS

You can choose the engine you prefer between two options:
Kubota D1105
or Perkins 403D-11.

GENERAC® LED LAMPS

The model with the highest illumination capacity of the range! As option, the floodlights can be powered with 24 Volts to even increase the safety of the machine.

A MINING MACHINE

High quality features such as the heavy duty frame, optional road trailer and the anti-breaking LED floodlights make the VT-Mine a model perfectly suitable for hard environments like mining areas.



OPTIONS AVAILABLE

- Low speed site-tow trailer (standard)
- Special trailer with brakes for mining
- Low voltage kit
- Zinc coated skid base
- Additional spare type with support for VT-Mine
- Pre-heating system
- AMOSS kit
- Main/generator selector switch
- Additional outlet socket 16A 230V
- Darkness sensor
- Electric tilting heads
- Earth picket with 5m cable
- Plastic box for documents
- Dedicated colour
- Chalwyn valve
- Certified spark arrestor
- Hot-dip zinc coating of mast sections
- Insulation monitoring device
- Remote controller (telemetric system)
- Remote emergency stop

HYDRO

The Hydro light tower is a model with vertical mast and hydraulic lifting system. It can be powered by a power generator eventually placed on its back. The operator can use a own solution or choose between optional 10 kVA or 22 kVA power generators provided by Generac Mobile®. The Hydro model can be considered as a “two-in-one” solution ideal for customers interested in having a mobile lighting tower that also boasts a powerful generator.



Hydro MH

Hydro LED

| TECHNICAL DATA | | Hydro MH | Hydro LED |
|------------------------------------|-------------------------|-----------------------|-----------------------|
| Minimum dimensions (mm) | Length x Width x Height | 3820 x 1566 x 2536 | 3820 x 1566 x 2536 |
| Maximum dimensions (mm) | Length x Width x Height | 3820 x 1566 x 8500 | 3820 x 1566 x 8500 |
| Dry weight (kg) | Without generator | 760 | 751 |
| Lifting system | M:Manual / H:Hydraulic | H | H |
| Mast rotation (°) | | 340 | 340 |
| Lamps power (W) | | 4 x 1000 | 4 x 320 |
| Lamps type | MH:MetalHalide / LD:LED | MH | LD |
| Total lumen (Lm) | | 360000 | 167300 |
| Illuminated area (m ²) | | 4200 | 4500 |
| Inlet Plug | A/V/Hz | 32/380/50 – 32/400/60 | 16/380/50 – 16/400/60 |
| Optional generator | kVA | 22 | 10 |
| Wind speed resistance (km/h) | | 110 | 110 |

OPTIONS AVAILABLE

- Low speed site-tow trailer (standard)
- Road trailer type C (adjustable)
- Ball hitch type 50 mm
- Eyelet hitch type 50 mm
- French hitch type 68mm for road trailer type C
- Documents for EU road registration
- Additional spare tyre with support
- Earth picket with 5m cable
- Plastic box for documents
- Dedicated colour
- Hot-dip zinc coating of mast sections

LAMP OPTIONS

Choose the lamp type you prefer between 4x1000 metal halide or the innovative 4x320W LED floodlights.

OPTIONAL GENERATORS

The Hydro can be provided with a power generator of your choice (10 kVA for the LED version or 22 kVA for the MH version).

HYDRAULIC MAST

A vertical telescopic mast with an hydraulic lifting system and a maximum height of 8.5 meters



EUROPE

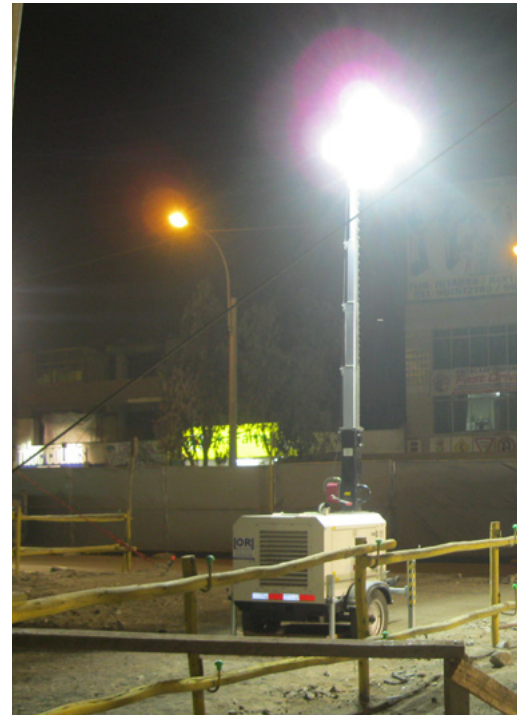
INTERNATIONAL

| TECHNICAL DATA | | EUROPE | | INTERNATIONAL | |
|---------------------------|--------------------|------------------|------------------|------------------|------------------|
| Optional power generator | | GMN-10P | GMN-22P | GMB-10P | GMB-22P |
| Engine | | Perkins 403D-11G | Perkins 404D-22G | Perkins 403D-11G | Perkins 404D-22G |
| Cylinders (q.ty) | | 3 | 4 | 3 | 4 |
| Engine speed (RPM) | 50 Hz | 1500 | 1500 | 1500 | 1500 |
| Engine cooling | L: Liquid / A: Air | L | L | L | L |
| Stand by power (LTP) | kVA/V/Hz | 10/400/50 | 22/400/50 | 9/400/50* | 22/400/50* |
| Prime power (PRP) | kVA/V/Hz | 9/400/50 | 20/400/50 | 8,5/400/50* | 20/400/50* |
| Running time (h) | with only lamps ON | 70 h | 35 h | 53 h | 26 h |
| Avg. sound pressure | dB(A) @ 7m | 66 | 58 | 66 | 66 |
| Tank capacity (liters) | | 68 l | 68 l | 51 l | 51 l |
| Liquid containment (110%) | √: Yes / ●: No | √ | √ | ● | ● |

*60Hz available on request

VT8

The compact footprint and ease of use are two main features that make the VT8 light tower one of the top models in the Generac Mobile® range. High performance balanced with low cost allowed the VT8 to become the best-seller model in the extra-European market.



VT8 K3

VT8 Y3

VT8 P3

| TECHNICAL DATA | | VT8 K3 | VT8 Y3 | VT8 P3 |
|------------------------------------|-------------------------|---------------------|---------------------|---------------------|
| Minimum dimensions (mm) | Length x Width x Height | 2650 x 1300 x 2460 | 2650 x 1300 x 2460 | 2650 x 1300 x 2460 |
| Maximum dimensions (mm) | Length x Width x Height | 2650 x 2460 x 8000 | 2650 x 2460 x 8000 | 2650 x 2460 x 8000 |
| Dry weight (kg) | | 719 | 719 | 719 |
| Lifting system | M:Manual / H:Hydraulic | M | M | M |
| Mast rotation (°) | | 340 | 340 | 340 |
| Lamps power (W) | | 4 x 1000 | 4 x 1000 | 4 x 1000 |
| Lamps type | MH:MetalHalide / LD:LED | MH | MH | MH |
| Total lumen (Lm) | | 360000 | 360000 | 360000 |
| Illuminated area (m ²) | | 4200 | 4200 | 4200 |
| Engine | | Kubota D1105 | Yanmar 3TNM72 | Perkins 403-D11G |
| Engine cooling | L: Liquid / A: Air | L | L | L |
| Cylinders (q.ty) | | 3 | 3 | 3 |
| Engine speed (RPM) | 50 / 60 Hz | 1500 / 1800 | 1500 / 1800 | 1500 / 1800 |
| Liquid containment (110%) | √: Yes / •: No | • | • | • |
| Alternator | kVA/V/Hz | 8/220/50 – 8/240/60 | 8/220/50 – 8/240/60 | 8/220/50 – 8/240/60 |
| Outlet Socket | kVA/V/Hz | 3/220/50 – 3/240/60 | 3/220/50 – 3/240/60 | 3/220/50 – 3/240/60 |
| Avg. sound pressure | dB(A) @ 7m | 68 | 68 | 68 |
| Wind speed resistance (km/h) | | 110 | 110 | 110 |
| Tank capacity (liters) | | 75 | 75 | 75 |
| Total running time (h) | | 44 | 47 | 44 |

THE BEST SELLER

The VT8 is the best seller model of light tower in the extra-european market, thanks to the vertical mast and the high quality features granted by Generac Mobile®.

TOP STABILITY

Five fully integrated stabilizers will ensure maximum stability in every application.

VERTICAL MAST

A telescopic vertical mast with manual lifting system and a maximum height of 8 meters.



METAL HALIDE LAMPS

4x1000W powerful metal halide lamps able to illuminate medium and big working areas.

TRAILER OPTIONS

The VT8 is equipped as standard with a low speed trailer but it can be also mounted on a straight road trailer.

ENGINE OPTIONS

You can choose the engine you prefer between Yanmar 3TN, Kubota D1105 and Perkins 403D-11.

OPTIONS AVAILABLE

- Low speed site-tow trailer (standard)
- Road trailer type A (straight)
- Road axle only
- 110V sockets
- Pre-heating system
- Earth picket with 5m cable
- Main/generator selector switch
- Plastic box for documents
- Dedicated colour
- Shut off valve
- Certified spark arrestor
- Hot-dip zinc coating of mast sections
- Ball hitch type 50 mm
- Eyelet hitch type 50 mm
- Eco panel with digital timer and darkness sensor

VMAX

VMAX is the first CROSSOVER in the industry, made by Generac Mobile®. This machine offers to our customers the performance of traditional light towers joined with new great and unique features. Available with 6x320 LED floodlights.



GENERAC® LED LAMPS

6x320 W high efficiency
LED floodlights designed by
Generac Mobile®.

VMAX P

| TECHNICAL DATA | | |
|------------------------------------|---------------------------|---------------------|
| Minimum dimensions (mm) | Length x Width x Height | 2430 x 1130 x 2450 |
| Maximum dimensions (mm) | Length x Width x Height | 2430 x 2190 x 8000 |
| Dry weight (kg) | | 760 |
| Lifting system | M:Manual / H:Hydraulic | M |
| Mast rotation (°) | | 340 |
| Lamps power (W) | | 6 x 320 |
| Lamps type | MH: MetalHalide / LD: LED | LD |
| Total lumen (Lm) | | 276000 |
| Illuminated area (m ²) | | 5200 |
| Engine | | Perkins 403D-11G |
| Engine cooling | L: Liquid / A: Air | L |
| Cylinders (q.ty) | | 3 |
| Engine speed (RPM) | 50 / 60 Hz | 1500 / 1800 |
| Liquid containment (110%) | √: Yes / •: No | √ |
| Alternator | kVA/V/Hz | 8/220/50 – 8/240/60 |
| Outlet Socket | kVA/V/Hz | 3/220/50 – 3/240/60 |
| Avg. sound pressure | dB(A) @ 7mt | 63 |
| Wind speed resistance (km/h) | | 110 |
| Tank capacity (liters) | | 110 |
| Total running time (h) | | 104 |

HANDLING FROM 4 SIDES

The machine offers the possibility of handling with forklift from 4 sides for maximum flexibility.

REINFORCED FRAME

A more resistant canopy with reinforced frame with a protection to the frontal side of the machine makes the VMAX the perfect lighting tower for heavy applications.

MAXIMUM STABILITY

Four fully integrated outriggers will ensure maximum stability in every application and environment.

GENERAC® LED LAMPS

6x320W powerful LED lamps able to illuminate medium and big working areas.

MOBILE & STATIONARY

Thanks to the new system of stabilizers, the VMAX offers its customers the ability to transform mobile machine in static few minutes and easy steps.

LIQUID CONTAINMENT TANK

A liquid containment tank to avoid any risk of leakages on the ground.



OPTIONS AVAILABLE

- Low speed site-tow trailer (standard)
- Road trailer type A (straight)
- Road axle only
- 110V outlet socket
- Pre-heating system
- Earth picket with 5m cable
- Main/generator selector switch
- Plastic box for documents
- Dedicated colour
- Shut off valve
- Certified spark arrestor
- Auto-start with timer and darkness sensor
- Hot-dip zinc coating of mast sections
- Ball hitch type 50 mm
- Eyelet hitch type 50 mm
- Eco panel with digital timer and darkness sensor

VTevo

The lighting power of 4x320W LED floodlights meets a very narrow canopy design evolving the new VTevo onto the most compact and eco-friendly lighting tower ever created! VTevo will help you to skimp up to 75% of fuel and protect our environment with a reduction in carbon emissions up to 10 Ton per year. The machine can run continuously without refuelling up to 200 hours.



GENERAC® LED LAMPS

4x320 W high efficiency LED floodlights designed by Generac Mobile®.



VTevo K2

VTevo Y1

| TECHNICAL DATA | | VTevo K2 | VTevo Y1 |
|------------------------------------|-------------------------|---------------------|---------------------|
| Minimum dimensions (mm) | Length x Width x Height | 2480 x 1310 x 2450 | 2480 x 1310 x 2450 |
| Maximum dimensions (mm) | Length x Width x Height | 2480 x 2400 x 8000 | 2480 x 2400 x 8000 |
| Dry weight (kg) | | 658 | 640 |
| Lifting system | M:Manual / H:Hydraulic | M | M |
| Mast rotation (°) | | 340 | 340 |
| Lamps power (W) | | 4 x 320 | 4 x 320 |
| Lamps type | MH:MetalHalide / LD:LED | LD | LD |
| Total lumen (Lm) | | 167300 | 167300 |
| Illuminated area (m ²) | | 4100 | 4100 |
| Engine | | Kubota Z482 | Yanmar L70N |
| Engine cooling | L: Liquid / A: Air | L | A |
| Cylinders (q.ty) | | 2 | 1 |
| Engine speed (RPM) | 50 / 60 Hz | 1500 / 1800 | 3000 / 3600 |
| Liquid containment (110%) | √:Yes / •:No | √ | √ |
| Alternator | kVA/V/Hz | 5/220/50 – 5/240/60 | 5/220/50 – 5/240/60 |
| Outlet Socket | kVA/V/Hz | 2/220/50 – 2/240/60 | 2/220/50 – 2/240/60 |
| Avg. sound pressure | dB(A) @ 7mt | 60 | 63 |
| Wind speed resistance (km/h) | | 110 | 110 |
| Tank capacity (liters) | | 120 | 120 |
| Total running time (h) | | 200 | 200 |

LIQUID CONTAINMENT TANK

A liquid containment tank to avoid any risk of leakages on the ground.

ENVIRONMENTALLY FRIENDLY

Protect the environment with VTevo: reduced CO₂ emission up to 10 ton per year compared to a traditional light tower!

GENERAC® LED LAMP

4x320W high efficiency LED floodlights designed by Generac Mobile®. Granted life expectation: 35000 working hours!

HEAVY DUTY FRAME

Steel reinforced body for maximum reliability, with large cooling grates positioned on 2 sides.

FUEL SAVING

Compared to a traditional MH light tower, you can save with the VTevo up to 75% of the fuel!



OPTIONS AVAILABLE

- Low speed site-tow trailer (standard)
- Road trailer type A (straight)
- Road axle only
- Zinc coated skid base
- Pre-heating system
- Earth picket with 5m cable
- Certified spark arrestor
- Shut off valve
- Dedicated colour
- Second year of warranty
- Ball hitch type 50 mm
- Eyelet hitch type 50 mm
- Eco panel with digital timer and darkness sensor

LINKTOWER T3

A new design of the Linktower, one of the most innovative and revolutionary models in the Generac Mobile® range! It is a mobile light tower which can be powered by an external power source like a power generator, the main or another light tower with built-in generator.



Available also in ATEX version (Div. II Class 2).

Linktower T3 LED Linktower T3 ATEX Linktower T3 UFO

| TECHNICAL DATA | | Linktower T3 LED | Linktower T3 ATEX | Linktower T3 UFO |
|------------------------------------|-------------------------|-----------------------|-----------------------|-----------------------|
| Minimum dimensions (mm) | Length x Width x Height | 1230 x 780 x 2110 | 1200 x 800 x 2680 | 1230 x 780 x 2420 |
| Maximum dimensions (mm) | Length x Width x Height | 1870 x 1460 x 6700 | 1870 x 1472 x 6700 | 1870 x 1460 x 6300 |
| Dry weight (kg) | | 248 | 281 | 220 |
| Lifting system | M:Manual / H:Hydraulic | M | M | M |
| Mast rotation (°) | | 340 | 340 | 340 |
| Lamps power (W) | | 4 x 185 | 4 x 150 | 1 x 400 |
| Lamps type | MH:MetalHalide / LD:LED | LD | LD | LD |
| Total lumen (Lm) | | 93000 | 61000 | 50000 |
| Illuminated area (m ²) | 180° / 360° | 2500 / n.a. | 2200 / n.a. | n.a. / 1000 |
| Outlet Socket | A/V/Hz | 16/220/50 – 16/240/60 | - | 16/220/50 – 16/240/60 |
| Inlet Plug | A/V/Hz | 16/220/50 – 16/240/60 | 16/220/50 – 16/240/60 | 16/220/50 – 16/240/60 |
| Wind speed resistance (km/h) | | 80 | 80 | 80 |
| Standard trailer | | Hand Trolley | Hand Trolley | Hand Trolley |

EASY HANDLING

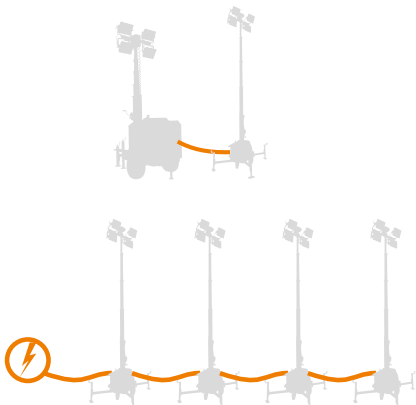
Thanks to the practical manual hand trolley, the light weight and the new jockey wheel, a single operator can handle the Linktower quickly and safely in every kind of working area.

SIDE PANELS

You can open the side panels to access the inner space that can be used as storage for documents and tools.

LINKABLE IN SERIES

The main feature of the Linktower T3 is that up to 4 Linktowers T3 LED or up to 7 Linktower T3 UFO can be connected in series to a single power source, providing an high illumination area with reduced fuel consumption.



NEW STABILIZERS

A new model of robust and easy stabilizer to perfectly level the light tower in seconds.

RAIN COVER DESIGN

The new frame of the Linktower T3 is designed to better protect the control panel from rain.



Standard control panel



Digital Astrotimer

OPTIONS AVAILABLE

- Digital astrotimer for auto start/stop
- Earth picket with 5m cable
- Dedicated colour
- Digital timer
- Darkness sensor kit

MT1

The smallest mobile lighting tower equipped with built-in generator, the MT1 has been developed with the specific intent to be easily handled by a single operator, making it an ideal solution for illuminating small to medium sized working areas.



MT1 LED

MT1 RT-UFO

| TECHNICAL DATA | | MT1 LED | MT1 RT-UFO |
|------------------------------------|-------------------------|---------------------|---------------------|
| Minimum dimensions (mm) | Length x Width x Height | 1100 x 1180 x 1900 | 2482 x 1318 x 2500 |
| Maximum dimensions (mm) | Length x Width x Height | 1630 x 2080 x 5300 | 2482 x 2280 x 5500 |
| Dry weight (kg) | | 339 | 459 |
| Lifting system | M:Manual / H:Hydraulic | M | M |
| Lamps power (W) | | 4 x 185 | 1 x 400 |
| Lamps type | MH:MetalHalide / LD:LED | LED | LED |
| Total lumen (Lm) | | 93000 | 50000 |
| Illuminated area (m ²) | 180° / 360° | 2100 / n.a. | n.a. / 850 |
| Engine | | Yanmar L70N | Yanmar L70N |
| Engine cooling | L: Liquid / A: Air | A | A |
| Cylinders (q.ty) | | 1 | 1 |
| Engine speed (RPM) | 50 / 60 Hz | 3000 / 3600 | 3000 / 3600 |
| Liquid containment (110%) | √:Yes / •:No | √ | √ |
| Alternator | kVA/V/Hz | 5/220/50 – 5/240/60 | 5/220/50 – 5/240/60 |
| Outlet Socket | kVA/V/Hz | 2/220/50 – 2/240/60 | 2/220/50 – 2/240/60 |
| Avg. sound pressure | dB(A) @ 7mt | 68 | 68 |
| Wind speed resistance (km/h) | | 80 | 80 |
| Tank capacity (liters) | | 17 | 17 |
| Total running time (h) | | 34 | 34 |
| | | Hand trolley | Road trailer |

EASY HANDLING

The front steering handle combined with four wheels and a light weight ensure a large turning radius and easy transportation.

LAMP OPTIONS

Choose the lamp type you prefer between 4x185W LED or the innovative UFO 400W LED floodlight.



OPTIONS AVAILABLE

- Hand trolley (standard)
- Road trailer type E (straight)
- 110V outlet socket
- Earth picket with 5m cable
- Pre-heating system
- Plastic box for documents
- Dedicated colour
- Hot-dip zinc coating of mast sections
- Shut off valve
- Certified spark arrestor

MT2

One of the smallest mobile lighting towers of the Generac Mobile® range, the MT2 is equipped with 4x185W high-efficiency LED floodlights and a built-in generating set available in two different versions. This model is available on hand trolley for easy transportation.



| | | MT2 H | MT2 Y |
|------------------------------------|---------------------------|--------------------|--------------------|
| TECHNICAL DATA | | | |
| Minimum dimensions (mm) | Length x Width x Height | 1270 x 980 x 1870 | 1270 x 980 x 1870 |
| Maximum dimensions (mm) | Length x Width x Height | 1470 x 1420 x 5500 | 1470 x 1420 x 5500 |
| Dry weight (kg) | | 320 | 320 |
| Lifting system | M: Manual / H: Hydraulic | M | M |
| Lamps power (W) | | 4 x 185 | 4 x 185 |
| Lamps type | MH: MetalHalide / LD: LED | LD | LD |
| Total lumen (Lm) | | 93000 | 93000 |
| Illuminated area (m ²) | | 2100 | 2100 |
| Engine | | Honda GX270 | Yanmar L70N |
| Engine cooling | L: Liquid / A: Air | A | A |
| Cylinders (q.ty) | | 1 | 1 |
| Engine speed | 50 Hz | 3000 | 3000 |
| Fuel type | D: Diesel / P: Petrol | P | D |
| Alternator | kVA/V/Hz | 5,3/220/50* | 4/220/50* |
| CEE outlet socket | A/V/Hz | 32/220/50* | 32/220/50* |
| Schuko outlet socket | A/V/Hz | 16/220/50* | 16/220/50* |
| Avg. sound pressure | dB(A) @ 7m | 69 | 68 |
| Wind speed resistance (km/h) | | 80 | 80 |
| Tank capacity (liters) | | 27 | 18 |
| Running time (h) | | 30 | 36 |

*60Hz available on request

EASY HANDLING

The front steering handle combined with four wheels and a light weight ensure a large turning radius and easy transportation.

GENERAC® LED LAMP

4x185W high efficiency LED floodlights made by Generac Mobile®.



OPTIONS AVAILABLE

- Earth picket with 5m cable

STATIONARY LINE

A range of static light towers that can be mounted on a base or fastened horizontally or vertically on a fixed structure like a container. Silent and compact models with different height masts, available with different kinds of floodlights, these light towers ensure high versatility in different working areas. Ideal solution for fixed position use.





CUBE+

- Height: 8.4 m
- 4x1000W MH or 4x320W LED
- Hydraulic lifting system
- Digital controller
- Different engines available

p. 46-47



HYDRO POWER BOX 360

- Height: 8.3 m
- 4x1000W MH or 4x320W LED
- Hydraulic lifting system
- Digital controller
- Vandalism-proof for events
- Different engines available

p. 48-49



CTF 10

- Height: 10 m
- 4x185W or 4x320W LED
- Manual lifting system
- Extremely compact
- Without engine

p. 50-51



TF 5,5 / 7

- Height: 5,5 m or 7 m
- 4x65W LED
- Manual lifting system
- On tripod

p. 52



CTF 5

- Height: 5 m
- 4x185W LED
- Manual lifting system
- Fastening on base

p. 52



CTF 5,5/7/9

- Height: 5,5 m, 7 m or 9 m
- 4x65W LED
- Manual lifting system
- Fastening on side

p. 52

STATIONARY LIGHT TOWER: OPTIONS



110 V sockets

Standard 230V inlet and/or outlet sockets are replaced with a 110V sockets.



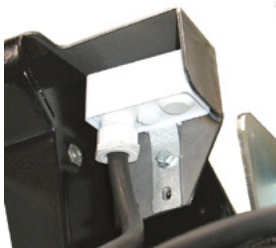
Digital timer

A digital programmable timer for automatic on/off of the floodlights (not compatible with GTL01 equipped models).



Shut off valve

An air intake shutoff valve for automatically turning off the diesel engine when overrunning.



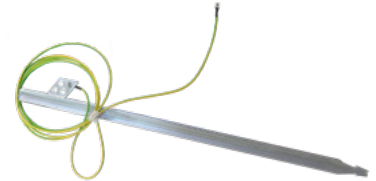
Darkness sensor

A sensor able to detect the environmental light for automatic on/off of the floodlights.



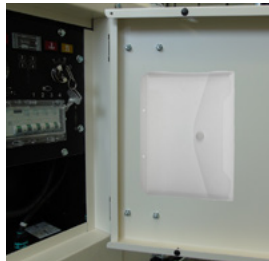
Pre-heating system

A system to heat the engine before starting. Suggested for cold environments.



Earth picket with 5 m cable

A grounding system including a 5 meters cable and a metal picket to be planted into the ground.



Plastic box for documents

A plastic box placed behind the side door to contain documents.



Certified spark arrestor

A device which prevents the emission of flammable debris from exhaust.



Hot deep zinc coating of mast

A process of dipping the mast steel sections into molten zinc to provide a distinct advantage over corrosion.



Insulation monitor device

A grounding system that disconnects the power supply when the resistance between the two conductors drops below the set value.

OTHER OPTIONS

- Remote controller (telemetric system)
- Remote emergency stop
- Dedicated color



CUBE+

The compact design of the new CUBE+ and its base configuration assure you that during events it cannot be moved or towed, and the new internal locking system will grant a safe and secure locking of stabilizers. Now available also equipped with HYPER LED Technology.



HYPER LED TECHNOLOGY

Special LED floodlights installed on a fully adjustable bracket allowing the operator to point the floodlights in any direction and provide total 360° illumination. Floodlights are also available with anti-glare system.



GENERAC® LED LAMPS

4x320 W high efficiency LED floodlights designed by Generac Mobile®.



GTL01 DIGITAL CONTROLLER

A digital controller specifically studied to manage every function of the light tower for the best ease of use.

CUBE+ Tradition CUBE+ Super LED K2 CUBE+ HYPER K2

| TECHNICAL DATA | | CUBE+ Tradition | CUBE+ Super LED K2 | CUBE+ HYPER K2 |
|------------------------------------|---------------------------|-----------------------|-------------------------|-------------------------|
| Minimum dimensions (mm) | Length x Width x Height | 1220 x 1150 x 2420 | 1220 x 1150 x 2420 | 1220 x 1150 x 2420 |
| Maximum dimensions (mm) | Length x Width x Height | 1790 x 1740 x 8400 | 1790 x 1740 x 8400 | 1790 x 1740 x 8400 |
| Dry weight (kg) | | 1060 | 1070 | 1070 |
| Lifting system | M: Manual / H: Hydraulic | H | H | H |
| Mast rotation (°) | | 340 | 340 | 340 |
| Lamps power (W) | | 4 x 1000 | 4 x 320 | 4 x 320 |
| Lamps type | MH: MetalHalide / LD: LED | MH | LD | LD |
| Total lumen (Lm) | | 360000 | 167300 | 184000 |
| Illuminated area (m ²) | 180° / 360° | n.a. / 4200 | 4500 / n.a. | 4500 / 4200 |
| Engine | | Kubota D1105 | Kubota Z482 | Kubota Z482 |
| Engine cooling | L: Liquid / A: Air | L | L | L |
| Cylinders (q.ty) | | 3 | 2 | 2 |
| Engine speed (RPM) | 50 / 60 Hz | 1500 / 1800 | 1500 / 1800 | 1500 / 1800 |
| Liquid containment (110%) | √: Yes / ●: No | √ | √ | √ |
| Alternator | kVA/V/Hz | 8/220/50 – 8/240/60 | 5/220/50 – 5/240/60 | 5/220/50 – 5/240/60 |
| Outlet socket | kVA/V/Hz | 3/220/50 – 3/240/60 | 2,5/220/50 – 2,5/240/60 | 2,5/220/50 – 2,5/240/60 |
| Inlet plug | A/V/Hz | 32/220/50 – 32/240/60 | 16/220/50- 16/240/60 | 16/220/50 – 16/240/60 |
| Avg. sound pressure | dB(A) @ 7m | 63 | 58 | 58 |
| Wind speed resistance (km/h) | | 80 | 80 | 80 |
| Tank capacity (liters) | | 170 | 170 | 170 |
| Running time (h) | | 100 | 283 | 283 |

OPTIONS AVAILABLE

CUBE+ (with engine)

- Darkness sensor
- 110V sockets
- Earth picket with 5m cable
- Pre-heating system
- Plastic box for documents
- Dedicated colour
- Shut off valve
- Certified spark arrestor
- Hot-dip zinc coating of mast sections
- Insulation monitoring device
- Remote controller (telemetric system)
- Remote emergency stop

CUBE+ (empty version)

- Digital timer
- Darkness sensor
- 110V sockets
- Earth picket with 5m cable
- Plastic box for documents
- Dedicated colour
- Hot-dip zinc coating of mast sections



LAMP OPTIONS

Choose the lamp type you prefer between 4x1000W metal halide or 4x320W LED floodlights.

BOLTED FRAME

A bolted frame for high resistance to vibrations, wear and rust.

LIQUID CONTAINMENT TANK

A liquid containment tank to avoid any risk of leakages on the ground.

SAFE LOCKING STABILIZERS

An adjustable locking system embedded in the machine frame.

TOP ACCESSIBILITY

5 wide doors for a complete access to the technical area.

CUBE+ Empty MH CUBE+ Empty LED CUBE+ HYPER Empty

| TECHNICAL DATA | | CUBE+ Empty MH | CUBE+ Empty LED | CUBE+ HYPER Empty |
|------------------------------|---------------------------|-----------------------|-----------------------|-----------------------|
| Minimum dimensions (mm) | Length x Width x Height | 1220 x 1150 x 2420 | 1220 x 1150 x 2420 | 1220 x 1150 x 2420 |
| Maximum dimensions (mm) | Length x Width x Height | 1790 x 1740 x 8400 | 1790 x 1740 x 8400 | 1790 x 1740 x 8400 |
| Dry weight (kg) | | 996 | 1006 | 1006 |
| Lifting system | M: Manual / H: Hydraulic | H | H | H |
| Mast rotation (°) | | 340 | 340 | 340 |
| Lamps power (W) | | 4 x 1000 | 4 x 320 | 4 x 320 |
| Lamps type | MH: MetalHalide / LD: LED | MH | LED | LD |
| Total lumen (Lm) | | 360000 | 167300 | 184000 |
| Illuminated area (m2) | 180° / 360° | 4200 / n.a. | 4500 / n.a. | 4500 / 4200 |
| Liquid containment (110%) | √: Yes / •: No | √ | √ | √ |
| Outlet socket | A/V/Hz | 32/220/50 – 32/240/60 | 16/220/50 – 16/240/60 | 16/220/50 – 16/240/60 |
| Inlet plug | A/V/Hz | 32/220/50 – 32/240/60 | 16/220/50 – 16/240/60 | 16/220/50 – 16/240/60 |
| Avg. sound pressure | dB(A) @ 7m | 0 | 0 | 0 |
| Wind speed resistance (km/h) | | 80 | 80 | 80 |

HYDRO POWER BOX 360

A very special light tower, specifically developed for applications with high risk of tampering or damaging, provides a concrete anti-vandalism solution. The Hydro Power Box is devoid of protruding profiles to avoid any risk of injury even when in use during crowded events. The lighting system and the control panel are entirely enclosed within the machine by a casing with locks; access to staff is restricted to authorized persons only. An ideal solution for live events, concerts, rallies or public events.



HYPER LED TECHNOLOGY

Special LED floodlights installed on a fully adjustable bracket allowing the operator to point the floodlights in any direction and provide total 360° illumination. Floodlights are also available with anti-glare system.



GTL01 DIGITAL CONTROLLER

A digital controller specifically studied to manage every function of the light tower for the best ease of use.

HPB Tradition

HPB 360 K2

| TECHNICAL DATA | | HPB Tradition | HPB 360 K2 |
|------------------------------------|---------------------------|-----------------------|-------------------------|
| Minimum dimensions (mm) | Length x Width x Height | 1200 x 1200 x 2646 mm | 1200 x 1200 x 2646 mm |
| Maximum dimensions (mm) | Length x Width x Height | 1200 x 1200 x 8300 | 1200 x 1200 x 8300 |
| Dry weight (kg) | | 1290 | 1298 |
| Lifting system | M:Manual / H:Hydraulic | H | H |
| Lamps rotation (°) | | 340 | 340 |
| Lamps power (W) | | 4 x 1000 | 4 x 320 |
| Lamps type | MH: MetalHalide / LD: LED | MH | LD |
| Total lumen (Lm) | | 360000 | 184000 |
| Illuminated area (m ²) | | n.a. / 4200 | 4500 / 4200 |
| Engine | | Kubota D1105 | Kubota Z482 |
| Engine cooling | L: Liquid / A: Air | L | L |
| Cylinders (q.ty) | | 3 | 2 |
| Engine speed (RPM) | 50 / 60 Hz | 1500 / 1800 | 1500 / 1800 |
| Liquid containment (110%) | √: Yes / •: No | √ | √ |
| Alternator | kVA/V/Hz | 8/220/50 – 8/240/60 | 5/220/50 – 4/240/60 |
| Outlet Socket | kVA/V/Hz | 3/220/50 – 3/240/60 | 2,5/220/50 – 2,5/240/60 |
| Inlet plug | A/V/Hz | 32/220/50 – 32/240/60 | 16/220/50 – 16/240/60 |
| Avg. sound pressure | dB(A) @ 7mt | 65 | 64 |
| Wind speed resistance (km/h) | | 80 | 80 |
| Tank capacity (liters) | | 300 | 300 |
| Total running time (h) | | 176 | 500 |

OPTIONS AVAILABLE

HPB (with engine)

- Darkness sensor
- 110V sockets
- Earth picket with 5m cable
- Pre-heating system
- Plastic box for documents
- Dedicated colour
- Shut off valve
- Certified spark arrestor
- Hot-dip zinc coating of mast sections
- Insulation monitoring device
- Remote controller (telemetric system)
- Remote emergency stop

HPB (empty version)

- Digital timer
- Darkness sensor
- 110V sockets
- Earth picket with 5m cable
- Plastic box for documents
- Dedicated colour
- Hot-dip zinc coating of mast sections



TAMPER-PROOF

A unique solution preventing the risk of tampering, since the access to the technical area is lockable.

STEPLADDER ON THE TWO SIDES

The re-designed stepladder can be placed both on the frontal and the rear side of the machine, allowing the operator an easy and safe way to adjust the floodlights.

IDEAL FOR EVENTS

Thanks to its high safety features, the Hydro Power Box is ideal for illuminating live events like concerts and sport matches.

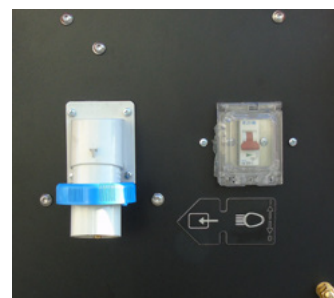
HPB Empty MH

HPB 360 Empty

| TECHNICAL DATA | | HPB Empty MH | HPB 360 Empty |
|------------------------------------|-------------------------|-----------------------|-----------------------|
| Minimum dimensions (mm) | Length x Width x Height | 1200 x 1200 x 2646 | 1200 x 1200 x 2646 |
| Maximum dimensions (mm) | Length x Width x Height | 1200 x 1200 x 8300 | 1200 x 1200 x 8300 |
| Dry weight (kg) | | 1232 | 1240 |
| Lifting system | M:Manual / H:Hydraulic | H | H |
| Lamps rotation (°) | | 340 | 340 |
| Lamps power (W) | | 4 x 1000 | 4 x 320 |
| Lamps type | MH:MetalHalide / LD:LED | MH | LD |
| Total lumen (Lm) | | 360000 | 184000 |
| Illuminated area (m ²) | 180° / 360° | n.a. / 4200 | 4500 / 4200 |
| Liquid containment (110%) | √:Yes / •:No | √ | √ |
| Outlet Socket | A/V/Hz | 32/220/50 – 32/240/60 | 16/220/50 – 16/240/60 |
| Inlet plug | A/V/Hz | 32/220/50 – 32/240/60 | 16/220/50 – 16/240/60 |
| Avg. sound pressure | dB(A) @ 7mt | 0 | 0 |
| Wind speed resistance (km/h) | | 80 | 80 |

CTF 10

The perfect product for a long-term illumination of medium to large sized working areas. The CTF 10 is a very compact model with the highest mast of the range: up to 22 units can be loaded on a single truck, but at the same time the 10 meters height mast ensures high illuminating coverage.



STANDARD CONTROL PANEL



CONTROL PANEL
With Link kit (additional outlet socket for connection in series)

CTF 10 LED

CTF 10 SUPER LED

| TECHNICAL DATA | | CTF 10 LED | CTF 10 SUPER LED |
|------------------------------------|---------------------------|-----------------------|-----------------------|
| Minimum dimensions (mm) | Length x Width x Height | 1150 x 1150 x 2552 | 1150 x 1150 x 2552 |
| Maximum dimensions (mm) | Length x Width x Height | 1903 x 1903 x 10000 | 1903 x 1903 x 10000 |
| Dry weight (kg) | | 385 | 396 |
| Lifting system | M:Manual / H:Hydraulic | M | M |
| Mast rotation (°) | | 340 | 340 |
| Lamps power (W) | | 4 x 185 | 4 x 320 |
| Lamps type | MH: MetalHalide / LD: LED | LD | LD |
| Total lumen (Lm) | | 93000 | 184000 |
| Illuminated area (m ²) | | 3600 | 5000 |
| Outlet Socket (Optional) | A/V/Hz | 16/220/50 – 16/240/60 | 16/220/50 – 16/240/60 |
| Inlet plug | A/V/Hz | 16/220/50 – 16/240/60 | 16/220/50 – 16/240/60 |
| Wind speed resistance (km/h) | | 80 | 80 |

LAMP OPTIONS

Choose the lamp type you prefer between two options: 4x185W LED or 4x320W LED floodlights.

THE HIGHEST MODEL

The CTF 10, thanks to its 10 meters height mast, is the highest model of the range, ensuring a very high illuminating coverage.

LINKABLE MODEL

With the optional "link kit", the user can connect different CTF 10 in series to a single power source, providing an high illumination area with reduced fuel consumption.

ACCESS DOORS

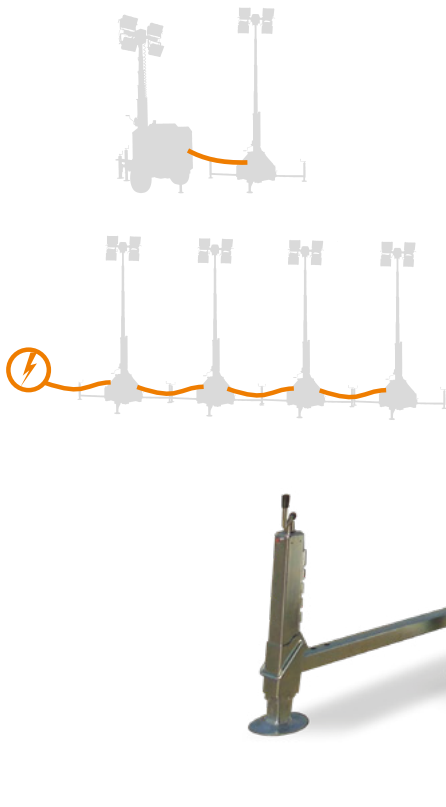
The new CTF 10 has 3 lockable doors to access the inside of the body for documents and tools storage.

ZERO EMISSIONS

Since it is powered by an external power source, the CTF 10 is a perfect solution when it's necessary the illumination of wide areas with low noise or low CO₂ emission requirements.

EASY HANDLING

New design! Now the CTF 10 is equipped with central lifting hook and forklift pockets for safe and easy handling.



OPTIONS AVAILABLE

- Earth picket with 5m cable
- Link kit for connection in series
- Darkness sensor kit
- Digital astrotimer for auto start/stop
- Digital timer

CTF & TF

CTF and TF light towers are the most basic models of the Generac Mobile® range. These static light towers are extremely practical and easy to be used, ensuring a good level of illumination for small to medium sized areas. The CTF variants of 5.5, 7 and 9 meters are ideal for applications in containers, mobile offices, temporary dormitories and power factories. The 5 meters CTF is suitable for application on road trailer. All these models are also perfect for civil protection use.



TF 5,5

TF 7

| TECHNICAL DATA | | TF 5,5 | TF 7 |
|------------------------------------|--------------------------|-----------------------|-----------------------|
| Minimum dimensions (mm) | Length x Width x Height | 350 x 400 x 1900 | 350 x 400 x 2350 |
| Maximum dimensions (mm) | Length x Width x Height | 1840 x 1500 x 5500 | 2020 x 1500 x 7000 |
| Dry weight (kg) | | 64 | 75 |
| Lifting system | M:Manual / H:Hydraulic | M | M |
| Lamps power (W) | | 4 x 65 | 4 x 65 |
| Lamps type | MH:Metal Halide / LD:LED | LD | LD |
| Total lumen (Lm) | | 23100 | 23100 |
| Illuminated area (m ²) | | 1200 | 1500 |
| Inlet plug | A/V/Hz | 16/220/50 – 16/240/60 | 16/220/50 – 16/240/60 |
| Wind speed resistance (km/h) | | 80 | 80 |



CTF 5 L

| TECHNICAL DATA | | CTF 5 L |
|------------------------------------|-------------------------|-----------------------|
| Minimum dimensions (mm) | Length x Width x Height | 1230 x 480 x 2040 |
| Maximum dimensions (mm) | Length x Width x Height | 1230 x 480 x 5000 |
| Dry weight (kg) | | 145 |
| Lifting system | M:Manual / H:Hydraulic | M |
| Mast rotation (°) | | 360 |
| Lamps power (W) | | 4 x 185 |
| Lamps type | MH:MetalHalide / LD:LED | LD |
| Total lumen (Lm) | | 93000 |
| Illuminated area (m ²) | | 2100 |
| Inlet plug | A/V/Hz | 16/220/50 – 16/240/60 |
| Wind speed resistance (km/h) | | 80 |



CTF 5,5

CTF 7

CTF 9

| TECHNICAL DATA | | CTF 5,5 | CTF 7 | CTF 9 |
|------------------------------------|---------------------------|-----------------------|-----------------------|-----------------------|
| Minimum dimensions (mm) | Length x Width x Height | 260 x 280 x 1900 | 260 x 280 x 2380 | 280 x 280 x 2500 |
| Maximum dimensions (mm) | Length x Width x Height | 310 x 550 x 5500 | 350 x 1060 x 7000 | 350 x 1060 x 9000 |
| Dry weight (kg) | | 67 | 85 | 93 |
| Lifting system | M:Manual / H:Hydraulic | M | M | M |
| Mast rotation (°) | | 360 | 360 | 360 |
| Lamps power (W) | | 4 x 65 | 4 x 65 | 4 x 65 |
| Lamps type | MH: Metal Halide / LD:LED | LD | LD | LD |
| Total lumen (Lm) | | 23100 | 23100 | 23100 |
| Illuminated area (m ²) | | 1200 | 1500 | 1800 |
| Inlet plug | A/V/Hz | 16/220/50 – 16/240/60 | 16/220/50 – 16/240/60 | 16/220/50 – 16/240/60 |
| Wind speed resistance (km/h) | | 80 | 80 | 80 |

SPECIAL LIGHT TOWERS

Generac Mobile® does take requests for specially designed models and will evaluate the viability of those requests on a case-by-case basis. Also available are a range of alternative products, such as light towers with double telescopic mast, extended height masts up to 20 metres and models placed on vehicles, skids or other special trailers.



GENERATORS

A wide range of diesel-driven power generators available in different configurations, able to satisfy many requirements regardless of the field of activity



DUST FIGHTERS

A wide range of dust suppression units suitable for different application fields as like as demolitions, mining, waste dumps, asbestos removal and much more.



PUMPS

Diesel engine driven pumps, dry vacuum assisted or self-priming models. A range of 4", 6" and 8" available in different configurations; super silenced or open set version.



WASH RACK

A range of washing bays with a special closed loop water recycling system. The ideal solution to wash your equipments without wasting water.



INDEX OF CONTENTS

| | |
|---|------------|
| GTL01 controller | p..... 4 |
| Certifications | p..... 5 |
| Green Light Towers Line (presentation) | p.....6-7 |
| Green Light Towers Line (available options)..... | p.....8-9 |
| VT-Hybrid Light Tower (technical data) | p... 10-11 |
| V20-Hybrid Light Tower (technical data) | p... 12-13 |
| Hydro Power Box Hybrid Light Tower (technical data) | p... 14-15 |
| CUBE ⁺ Hybrid Light Tower (technical data) | p... 16-17 |
| CUBE ⁺ NEXT Light Tower (technical data) | p... 18-19 |
| Mobile Light Towers Line (presentation) | p... 20-21 |
| Mobile Light Towers Line (available options) | p... 22-23 |
| VT1 Light Tower (technical data) | p... 24-25 |
| V20 Light Tower (technical data)..... | p... 26-27 |
| IQ20 Light Tower (technical data) | p... 28-29 |
| VT-Mine Light Tower (technical data) | p... 30-31 |
| Hydro Light Tower (technical data) | p... 32-33 |
| VT8 Light Tower (technical data) | p... 34-35 |
| VMAX Light Tower (technical data) | p... 36-37 |
| VTevo Light Tower (technical data) | p... 38-39 |
| Linktower T3 Light Tower (technical data) | p... 40-41 |
| MT1 Light Tower (technical data) | p... 42-43 |
| MT2Light Tower (technical data) | p... 44-45 |
| Stationary Light Towers Line (presentation) | p... 46-47 |
| Stationary Light Towers Line (available options) | p..... 48 |
| CUBE ⁺ Light Tower (technical data) | p... 50-51 |
| Hydro Power Box Light Tower (technical data) | p... 52-53 |
| CTF 10 Light Tower (technical data) | p... 54-55 |
| CTF 5 Light Tower (technical data) | p..... 56 |
| CTF 5.5 Light Tower (technical data) | p..... 56 |
| CTF 7 Light Tower (technical data) | p..... 56 |
| CTF 9 Light Tower (technical data) | p..... 56 |
| TF Light Tower (technical data) | p..... 56 |
| Special Light Towers | p..... 57 |
| Other products..... | p..... 58 |

DISTRIBUTOR:



GENERAC[®] | **MOBILE**

Generac Mobile Products Srl
Part of Generac Power Systems, Inc.
Via Stazione, 3 bis - 27030 Villanova d'Ardenghi (PV) - Italy
Tel +39.0382.567011 - gmp.srl@generac.com
www.generacmobile.com