

Quick start guide

PSoC™ 4100S Max pioneer kit

CY8CKIT-041S-MAX



Kit contents

1. PSoC™ 4100S Max pioneer board
2. Capacitive sensing expansion board
3. USB Type-A to Micro-B cable
4. Six jumper wires (five inches each)
5. 40-pin FFC cable (two inches)
6. Quick start guide (this document)

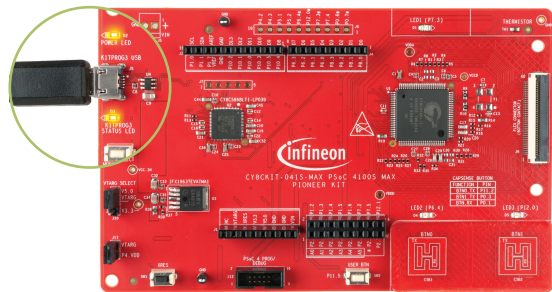


Before you start

1. Ensure that jumper J10 is in 5V position and that jumper J11 is populated.
2. Connect the board to your PC using the provided USB cable.
3. Observe that the Power LED and KitProg status LED turn ON.

Note: This demo does not require driver installation, but driver installation may occur in the background.

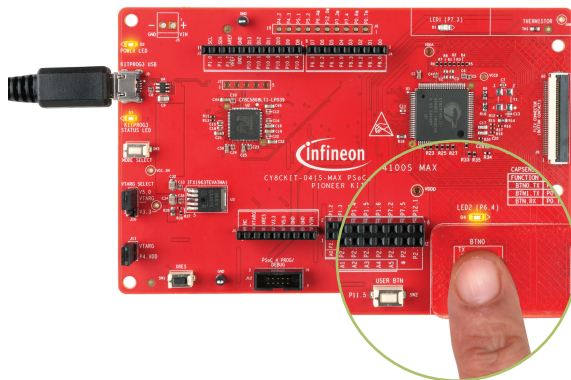
PSoC™ 4100S Max pioneer board connected to PC



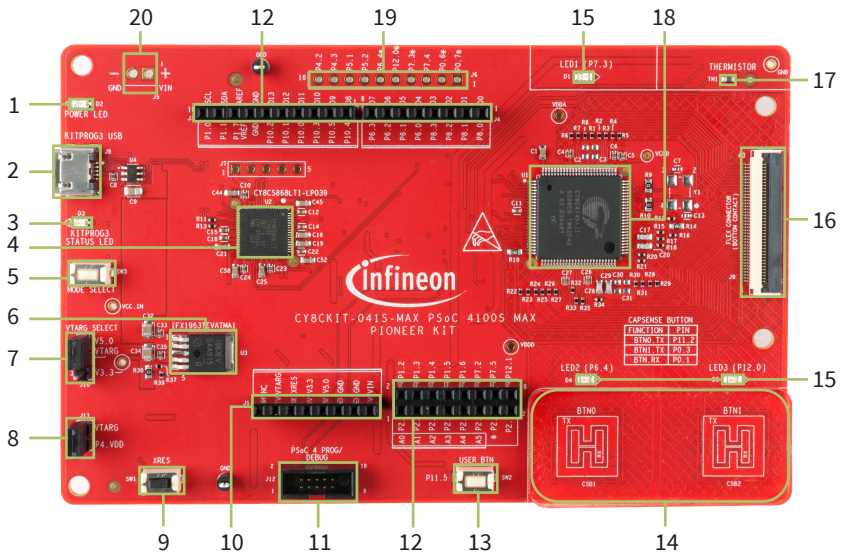
Test the basic operation

1. Press the XRES switch (SW1) to reset the device.
2. Touch a CAPSENSE™ button. Observe that the corresponding LED turns ON.
3. Remove the finger from the button. Observe that the LED turns OFF.
4. To evaluate additional features of this kit, see the code example, *CE231079 – PSOC™ 4: MSC CAPSENSE™ CSX button tuning*. See the PSOC™ 4100S Max pioneer kit guide for more code examples.

Finger touch on the CAPSENSE™ button



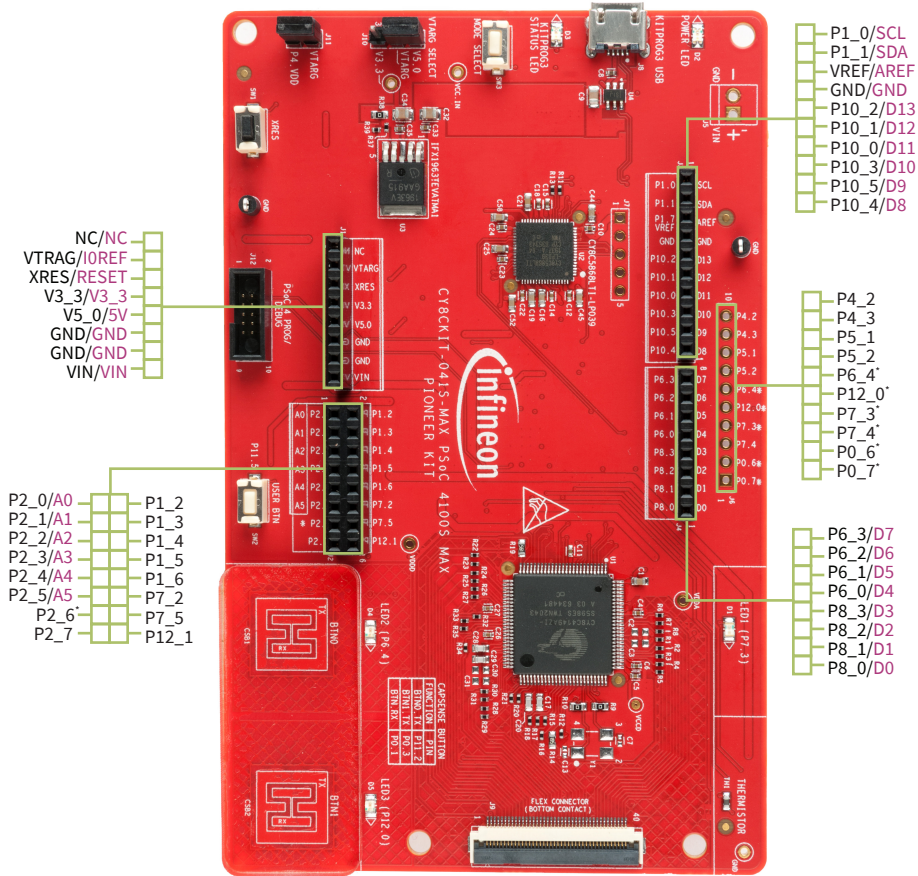
PSoC™ 4100S Max pioneer board details



- | | | | |
|----|--|----|--|
| 1 | Power LED (D2) | 11 | PSoC™ 4100S Max MCU 10-pin SWD program and debug header (J12) |
| 2 | KitProg3 USB connector (J8) | 12 | Arduino UNO R3-compatible I/O headers (J2, J3, J4) |
| 3 | KitProg3 status LED (D3) | 13 | User button (SW2) |
| 4 | PSoC™ 5LP-based KitProg3 programmer and debugger (CY8C5868LTI-LP039, U2) | 14 | CAPSENSE™ buttons (CSB1, CSB2) |
| 5 | KitProg3 programming mode selection button (SW3) | 15 | User LEDs (D1, D4, D5) |
| 6 | Voltage regulator (U3) | 16 | 40-pin FFC connector for capacitive sensing expansion board (J9) |
| 7 | Power selection jumper (J10) | 17 | Thermistor (TH1) |
| 8 | PSoC™ 4100S Max MCU current measurement header (J11) | 18 | PSoC™ 4100S Max MCU (CY8C4149AZI-S598, U1) |
| 9 | Reset button (SW1) | 19 | PSoC™ 4100S Max MCU extended I/O header (J6)* |
| 10 | Arduino UNO R3-compatible power header (J1) | 20 | External power supply connector (J5)* |

* Not populated; footprint only

PSoC™ 4100S Max pioneer board pinout details



LEGEND

- Arduino Uno R3 I/Os
- PSoc™ 4100S Max I/Os

Note: Not connected

For the latest information about this kit, visit www.cypress.com/CY8CKIT-041S-MAX